



Government of India  
Ministry of Earth Sciences  
India Meteorological Department



Press Release

Date: 15<sup>th</sup> September, 2025

Time of Issue: 1345 hours IST

**Subject: (i) Heavy to Very heavy rainfall likely to continue over Northeast India and Maharashtra for next 2-3 days with isolated extremely heavy rainfall likely over north Konkan and north Madhya Maharashtra on 15<sup>th</sup> September, 2025.**

**(ii) Conditions are favourable for further withdrawal of Southwest Monsoon from some more parts of Rajasthan and some parts of Punjab & Gujarat during next 2 days.**

**Realised weather during past 24 hours till 0830 hours IST of today, the 15<sup>th</sup> September, 2025:**

- ❖ **Heavy to very heavy rainfall with Extremely heavy rainfall ( $\geq 21$  cm)** has been recorded at isolated places over Sub-Himalayan West Bengal and Konkan.
  - ❖ **Very heavy rainfall (12-20 cm)** has been recorded at isolated places over Uttarakhand, East Uttar Pradesh, Assam, Gangetic West Bengal, Jharkhand, Bihar, Telangana and Coastal Andhra Pradesh.
  - ❖ **Heavy rainfall (7-11 cm)** has been recorded at isolated places over Punjab, Arunachal Pradesh, Meghalaya, Nagaland, East Madhya Pradesh, Odisha, Madhya Maharashtra, Marathawada, North Interior Karnataka.
- For more details of realised weather, kindly refer [Annexure I](#).**

**i. Weather Systems, Forecast and Warnings (refer to [Annexure II & III](#)):**

- ❖ The line of withdrawal of southwest monsoon continues to pass through 30.5°N /73.5°E, Sri Ganganagar, Nagaur, Jodhpur, Barmer and 25.5°N /70°E. Conditions are favourable for further withdrawal of Southwest Monsoon from some more parts of Rajasthan and some parts of Punjab & Gujarat during next 2 days. ([Annexure IV](#))
- ❖ The Low Pressure area over north Telangana & adjoining Vidarbha has become less marked at 0530 hrs IST of today, the 15<sup>th</sup> September, 2025. However, the associated upper air **cyclonic circulation** lies over East Vidarbha & neighbourhood in lower tropospheric levels tilting southwestwards with height.
- ❖ An upper air **cyclonic circulation** lies over East Bihar & neighbourhood in lower & middle tropospheric levels.
- ❖ An upper air **cyclonic circulation** lies over central Assam in lower tropospheric levels and another over Meghalaya & neighbourhood in lower to middle tropospheric levels.
- ❖ An upper air **cyclonic circulation** lies over southeast Bay of Bengal in lower tropospheric levels.

Under the influence of these systems, the following weather is likely:

**Northeast India:**

- ❖ Light/moderate rain/thunderstorm at most/many places with isolated **heavy rainfall** likely over Arunachal Pradesh during 15<sup>th</sup>-17<sup>th</sup> & on 20<sup>th</sup> & 21<sup>st</sup>; Assam & Meghalaya, Nagaland, Manipur, Mizoram & Tripura during 15<sup>th</sup> -21<sup>st</sup> September with **very heavy falls over Arunachal Pradesh on 15<sup>th</sup> & 16<sup>th</sup>; Nagaland and Assam & Meghalaya on 15<sup>th</sup> September.**

**South Peninsular India:**

- ❖ Light to moderate rain/thunderstorm & gusty winds (speed 30-40 kmph) at many/some places with isolated **heavy rainfall** likely over Tamil Nadu during 15<sup>th</sup>-19<sup>th</sup>; Coastal Andhra Pradesh & Yanam on 15<sup>th</sup>; Rayalaseema, Telangana & North Interior Karnataka during 15<sup>th</sup>-17<sup>th</sup>; Coastal & South Interior Karnataka on 17<sup>th</sup> September.

- ❖ Strong surface winds (speed reaching 30-40 kmph) very likely over Coastal Andhra Pradesh & Yanam and Rayalaseema during next 5 days.

#### East & Central India:

- ❖ Light to moderate rain/thunderstorm at most/many places with isolated **heavy rainfall** likely over Madhya Pradesh & Odisha on 15<sup>th</sup>; Vidarbha, Chhattisgarh, Gangetic West Bengal on 15<sup>th</sup> & 16<sup>th</sup>; Andaman & Nicobar Islands on 15<sup>th</sup> & during 17<sup>th</sup>-20<sup>th</sup>; Sub-Himalayan West Bengal & Sikkim, Jharkhand during 15<sup>th</sup>-18<sup>th</sup>; Bihar during 15<sup>th</sup>-19<sup>th</sup> September with isolated **very heavy falls over Sub-Himalayan West Bengal & Sikkim during 15<sup>th</sup>-17<sup>th</sup>; Bihar & Jharkhand on 15<sup>th</sup> & 16<sup>th</sup> September.**

#### West India:

- ❖ Isolated **Extremely heavy rainfall ( $\geq 21$  cm)** likely over Konkan and Madhya Maharashtra on 15<sup>th</sup> September.
- ❖ Light to moderate rain/thunderstorm at many/some places with **isolated heavy rainfall** likely over south Gujarat on 15<sup>th</sup>; Konkan & Goa, Madhya Maharashtra during 15<sup>th</sup>-18<sup>th</sup>; Marathawada during 15<sup>th</sup>-17<sup>th</sup> September with **very heavy falls over Marathawada on 15<sup>th</sup> & 16<sup>th</sup> and Konkan & Goa, Madhya Maharashtra on 16<sup>th</sup> September.**

#### Northwest India:

- ❖ Light to moderate rain/thunderstorm at some/isolated places with **isolated heavy rainfall** likely over Himachal Pradesh & Uttarakhand on 15<sup>th</sup> & 16<sup>th</sup>; West Uttar Pradesh on 15<sup>th</sup>; East Uttar Pradesh during 15<sup>th</sup>-19<sup>th</sup> September with **very heavy falls over Uttarakhand & East Uttar Pradesh on 15<sup>th</sup> September.**

#### Fishermen warning:

Fishermen are advised not to venture into the following areas as per Fishermen Warning Graphics:

##### Arabian Sea:

- Some parts of westcentral, southwest AS, along and off Somalia coast during 15<sup>th</sup> to 20<sup>th</sup> September, along and off Oman-Yemen coasts during 16<sup>th</sup>-18<sup>th</sup>; Northwest & adjoining Westcentral AS and adjoining sea area on 16<sup>th</sup>, 18<sup>th</sup> & 19<sup>th</sup>; along and off Konkan & Goa coasts, adjoining sea area on 15<sup>th</sup> September; along and off south Konkan, Goa coasts for 16<sup>th</sup> September.

##### Bay of Bengal (BoB):

- Along and off Sri Lanka coast, over some parts of southwest BoB during 15<sup>th</sup>, 16<sup>th</sup> & 19<sup>th</sup> September; many parts of southeast Bay of Bengal on 15<sup>th</sup> September; few parts of southeast Arabian sea on 18<sup>th</sup> September, many parts of southwest & southeast Arabian sea on 19<sup>th</sup>; Gulf of Mannar & adjoining Comorin area during 15<sup>th</sup> to 20<sup>th</sup>; over Andaman Sea during 18<sup>th</sup> to 20<sup>th</sup> September.

#### ii. Weather conditions and forecast over Delhi/NCR during 15<sup>th</sup> September to 18<sup>th</sup> September 2025 (Annexure V)

For more details, kindly refer National Weather Bulletin:

[https://mausam.imd.gov.in/responsive/all\\_india\\_forecast\\_bulletin.php](https://mausam.imd.gov.in/responsive/all_india_forecast_bulletin.php)

For District wise warnings refer: <https://mausam.imd.gov.in/responsive/districtWiseWarningGIS.php>

For Fishermen warning refer <https://rsmcnewdelhi.imd.gov.in/fishermen-warning.php>

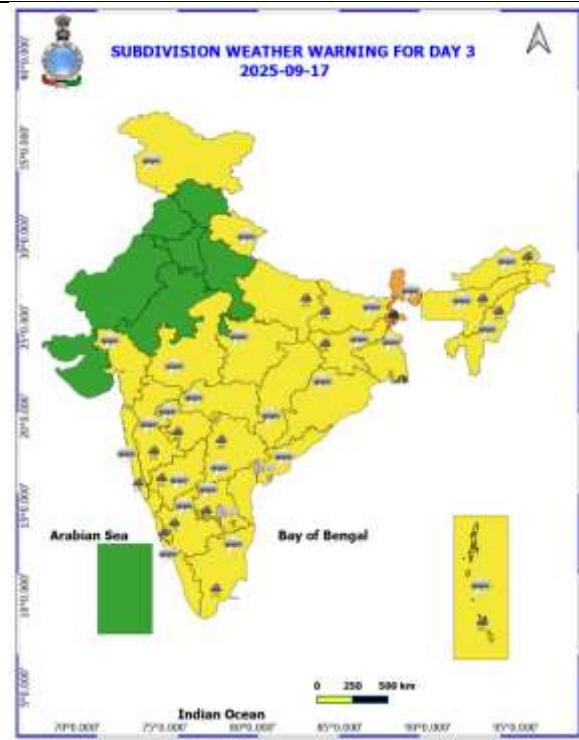
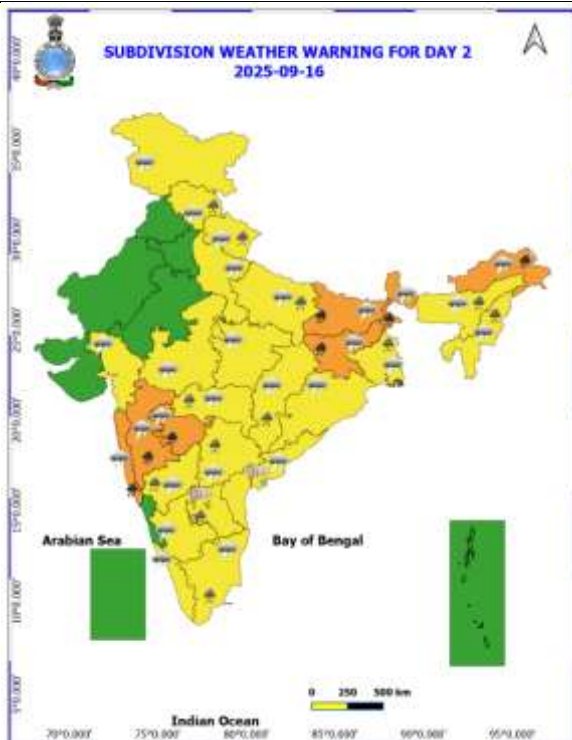
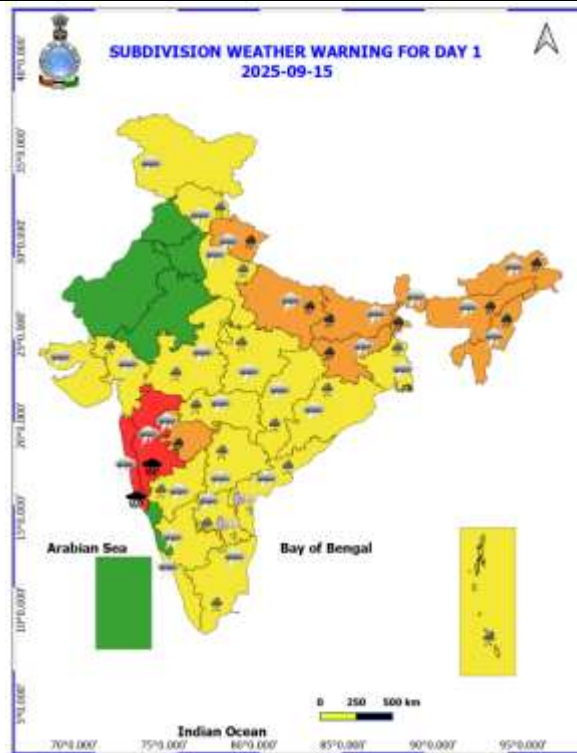
## Rainfall recorded (in cm) during past 24 hours till 0830 hours IST of today, the 15<sup>th</sup> September ( $\geq 7\text{cm}$ ):

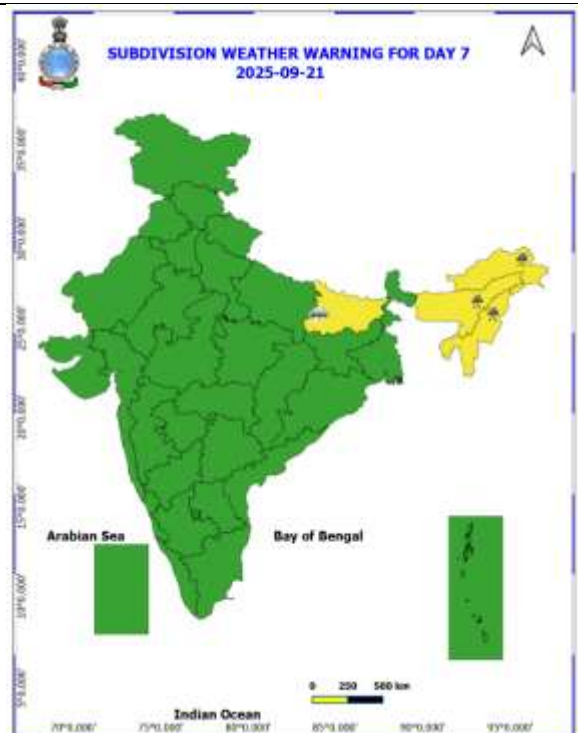
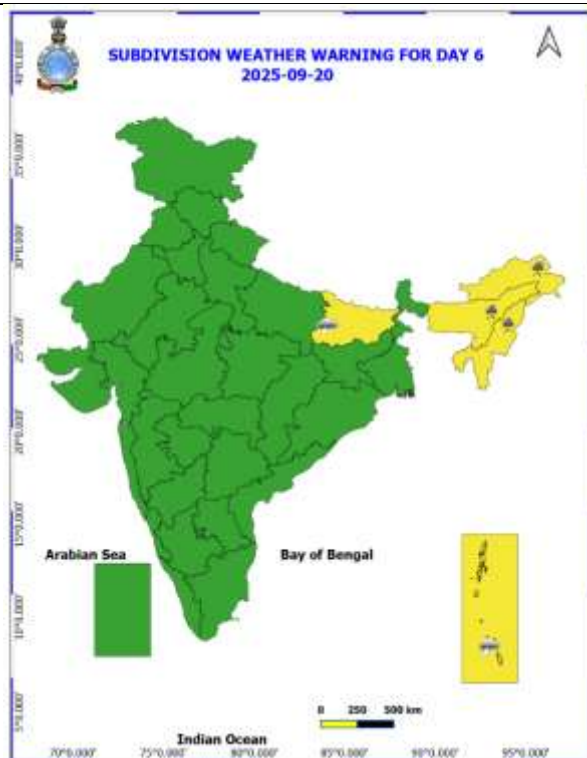
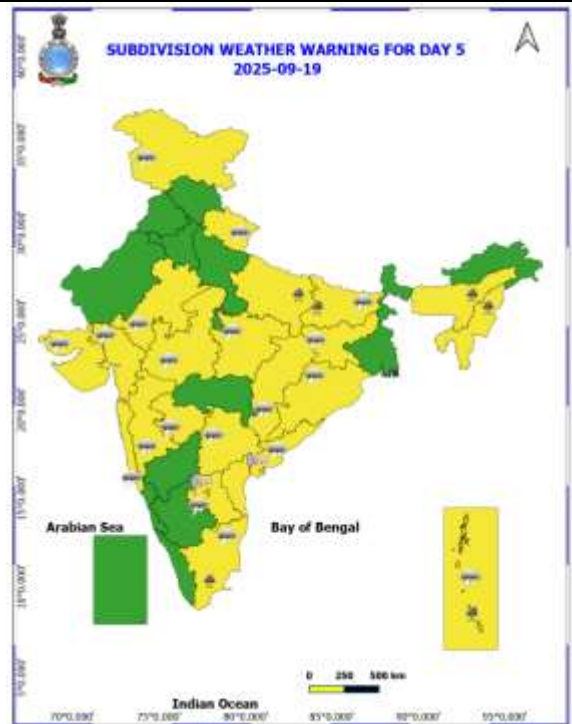
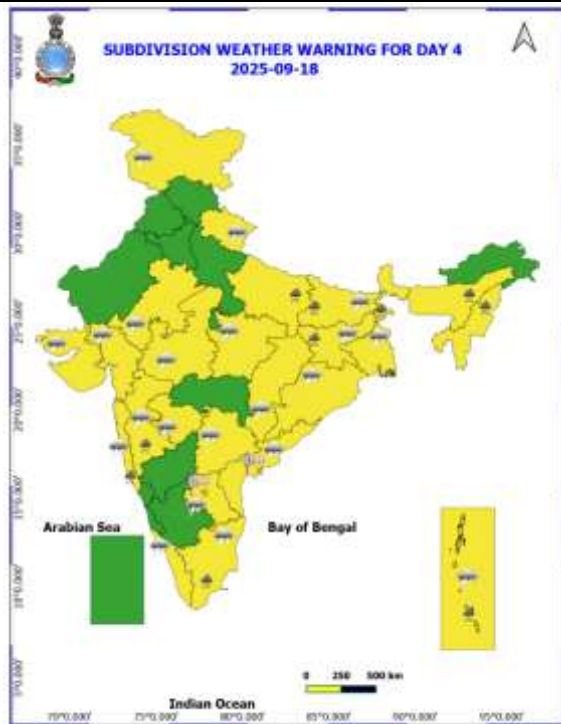
- ❖ **Sub-Himalayan West Bengal:** Toorsa Tea Garden (dist Alipurduar) 28, Jiti T.e. (dist Jalpaiguri) 17, Jhallong (dist Kalimpong) 12, Ghatia T.e. (dist Jalpaiguri) 11, Hilla T.e. (dist Jalpaiguri) 9, Kurti T.e. (dist Jalpaiguri) 9, Ghughumari (dist Cooch Behar) 8, Chengmari/diana (dist Jalpaiguri) 7, Chalouni Tea Estate (dist Jalpaiguri) 7;
- ❖ **Konkan:** Matheran (dist Raigad) 27, Panvel\_agri (dist Raigad) 17, Poladpur (dist Raigad) 16, Mahad (dist Raigad) 15, Karjat\_agri (dist Raigad) 15, Colaba - Imd Obsy (dist Mumbai City) 13, Mangaon (dist Raigad) 9, Tbia Imd Part Time (dist Thane) 8, Santacruz - Imd Obsy (dist Mumbai Suburban) 7, Mhasla (dist Raigad) 7, Uran (dist Raigad) 7, Roha (dist Raigad) 7, Mandangad (dist Ratnagiri) 7;
- ❖ **Gangetic West Bengal:** Digha (dist East Midnapore) 20, Asansol(cwc) (dist Paschim Bardhaman) 9, Asansol (dist Paschim Bardhaman) 7;
- ❖ **Uttarakhand:** Deoprayag (dist Garhwal Tehri) 19, Didihat (dist Pithoragarh) 10;
- ❖ **Jharkhand:** Zrs Dumka (dist Dumka) 15, Chakradharpur (dist West Singhbhum) 13, Sadar Chaibasa (dist West Singhbhum) 10, Daltonganj (dist Palamu) 9, Mandu Dvc (dist Ramgarh) 9, Rajdhanwar (dist Giridih) 9, Chainpur (dist Palamu) 8, Mandar (dist Ranchi) 7, Chaibasa (dist West Singhbhum) 7;
- ❖ **Assam & Meghalaya:** Sonitpur Aws (dist Sonitpur) 14, Mawsynram (dist East Khasi Hills) 11, Bhaghmara (dist South Garo Hills) 11, Sualkuchi Arg (dist Kamrup (rural)) 11, Chouldhuwaghat Arg (dist Lakhimpur) 11, Karimganj (dist Sribhumi) 10, Dhemaji (dist Dhemaji) 9, B P Ghat (dist Sribhumi) 8, Nahar Katia (dist Dibrugarh) 8, Lakhimpur Arg (dist Lakhimpur) 7, Nongstein (dist West Khasi Hills) 7, N.lakhimpur/lilabari (dist Lakhimpur) 7, Golaghat\_ Cwc (dist Golaghat) 7, Shella (dist East Khasi Hills) 7;
- ❖ **East Uttar Pradesh:** Nautanwa (dist Maharajganj) 13;
- ❖ **Telangana:** Hakimpet Iaf (dist M. Malkajgiri) 13, Kotgiri (dist Nizamabad) 9, Madnur (dist Kamareddy) 9, Himayatnagar (dist Hyderabad) 9, Cgwb Nagole(a) (dist M. Malkajgiri) 9;
- ❖ **Coastal Andhra Pradesh:** Guntur (dist Guntur) 13, Veligandla (dist Prakasam) 7;
- ❖ **North Interior Karnataka:** Kakkeri (dist Yadgir) 11, Ilkal (dist Bagalkote) 9, Lingasugur (dist Raichur) 9, Hunsagi (dist Yadgir) 7;
- ❖ **Marathawada:** Deoni (dist Latur) 11, Degloor - Fmo (dist Nanded) 10, Shirur Kasar (dist Beed) 9, Dharur (dist Beed) 8, Kaij (dist Beed) 8, Beed (dist Beed) 7;
- ❖ **Punjab:** Ranjit Sagar Dam Site (dist Pathankot) 9, Shahpur Kandi (dist Pathankot) 7;
- ❖ **Odisha:** Rajnagar (dist Kendrapara) 9, Nawana (dist Mayurbhanj) 9, Chilika (dist Khurda) 9;
- ❖ **Madhya Maharashtra:** Khutbav Daund Aws (dist Pune) 9, Padegaon\_agri (dist Satara) 9, Chinchwad - Arg (dist Pune) 8, Mahabaleshwar- Imd Obsy (dist Satara) 7;
- ❖ **Bihar:** Khagaria - 16, Raghupur (dist Vaishali) 9, Khizirsarai (dist Gaya) 9, Bidupur (dist Vaishali) 9, Parsa (dist Saran) 9, Jainagar (dist Madhubani) 9, Sahdei Buzurg (dist Vaishali) 9, Alinagar (dist Darbhanga) 8, Ghanshyampur (dist Darbhanga) 8, Neem Chak Bathani (dist Gaya) 8, Jhanjharpur (dist Madhubani) 8, Khusrupur (dist Patna) 7, Salakhua (dist Saharsa) 7, Madhepur (dist Madhubani) 7, Mairwa (dist Siwan) 7, Desri (dist Vaishali) 7, Mahanar (dist Vaishali) 7, Manpur (dist Gaya) 7, Sarairanjan (dist Samastipur) 7;
- ❖ **Arunachal Pradesh:** Roing (dist Lower Dibang Valley) 9, Namsai (dist Lohit) 9, Deomali\_aws (dist Tirap) 9, Naharlagun\_ Aws (dist Papumpara) 7;
- ❖ **Nagaland:** Mokokchang (dist Mokokchung) 9, Ongpangkong Nsdma\_aws (dist Mokokchung) 8, Zunheboto (dist Zunheboto) 7;
- ❖ **East Madhya Pradesh:** Bijuri (dist Anuppur) 8.

Table-1								
7 Days Rainfall Forecast								
S.No.	Subdivision	15- Sep	16- Sep	17- Sep	18- Sep	19- Sep	20- Sep	21- Sep
		Day 1	Day 2	Day 3	Day 4	Day 5	Day 6	Day 7
1	ANDAMAN & NICOBAR ISLANDS	FWS	FWS	FWS	WS	WS	WS	FWS
2	ARUNACHAL PRADESH	WS	WS	FWS	SCT	SCT	SCT	SCT
3	ASSAM & MEHGHALAYA	WS	WS	FWS	FWS	FWS	SCT	FWS
4	NAGALAND, MANIPUR, MIZORAM AND TRIPURA	WS	WS	FWS	FWS	SCT	SCT	FWS
5	SUB HIMALAYAN WEST BENGAL & SIKKIM	WS	WS	WS	WS	FWS	FWS	FWS
6	GANGETIC WEST BENGAL	WS	WS	WS	FWS	SCT	SCT	SCT
7	ODISHA	SCT	SCT	ISOL	ISOL	ISOL	SCT	SCT
8	JHARKHAND	WS	WS	WS	WS	FWS	SCT	SCT
9	BIHAR	FWS	FWS	FWS	FWS	SCT	SCT	SCT
10	EAST UTTAR PRADESH	FWS	FWS	FWS	FWS	SCT	SCT	SCT
11	WEST UTTAR PRADESH	ISOL	SCT	SCT	ISOL	ISOL	ISOL	ISOL
12	UTTARAKHAND	WS	FWS	SCT	SCT	SCT	SCT	SCT
13	HARYANA, CHANDIGARH & DELHI	ISOL	SCT	SCT	SCT	ISOL	DRY	DRY
14	PUNJAB	ISOL	SCT	SCT	SCT	ISOL	DRY	DRY
15	HIMACHAL PRADESH	SCT	FWS	SCT	SCT	SCT	ISOL	ISOL
16	JAMMU AND KASHMIR AND LADAKH	SCT	SCT	ISOL	SCT	SCT	DRY	DRY
17	WEST RAJASTHAN	DRY	DRY	DRY	ISOL	ISOL	ISOL	ISOL
18	EAST RAJASTHAN	ISOL	ISOL	ISOL	ISOL	ISOL	ISOL	ISOL
19	WEST MADHYA PRADESH	SCT	SCT	FWS	FWS	FWS	FWS	FWS
20	EAST MADHYA PRADESH	SCT	FWS	FWS	FWS	FWS	FWS	FWS
21	GUJRAT REGION	SCT	SCT	FWS	FWS	WS	WS	FWS
22	SAURASHTRA & KUTCH	SCT	SCT	FWS	FWS	WS	WS	FWS
23	KONKAN & GOA	WS	WS	FWS	SCT	SCT	SCT	SCT
24	MADHYA MAHARASHTRA	WS	FWS	FWS	SCT	SCT	SCT	SCT
25	MARATHWADA	WS	SCT	SCT	SCT	SCT	SCT	SCT
26	VIDARBHA	WS	WS	WS	WS	FWS	SCT	SCT
27	CHHATTISGARH	FWS	FWS	FWS	SCT	SCT	SCT	SCT
28	COASTAL ANDHRA PRADESH	SCT	SCT	SCT	SCT	SCT	FWS	SCT
29	TELANGANA	FWS	FWS	FWS	FWS	FWS	SCT	SCT
30	RAYALASEEMA	ISOL	ISOL	SCT	SCT	SCT	SCT	FWS
31	TAMILNADU & PUDUCHERRY	ISOL	SCT	FWS	SCT	SCT	ISOL	ISOL
32	COSTAL KARNATAKA	FWS	WS	WS	FWS	FWS	SCT	SCT
33	NORTH INTERIOR KARNATAKA	WS	WS	WS	SCT	SCT	ISOL	ISOL
34	SOUTH INTERIOR KARNATAKA	SCT	FWS	WS	SCT	SCT	ISOL	ISOL
35	KERALA AND MAHE	FWS	FWS	FWS	FWS	FWS	SCT	SCT
36	LAKSHADWEEP	FWS	FWS	FWS	FWS	SCT	SCT	SCT

- As the lead period increases forecast accuracy decrease.

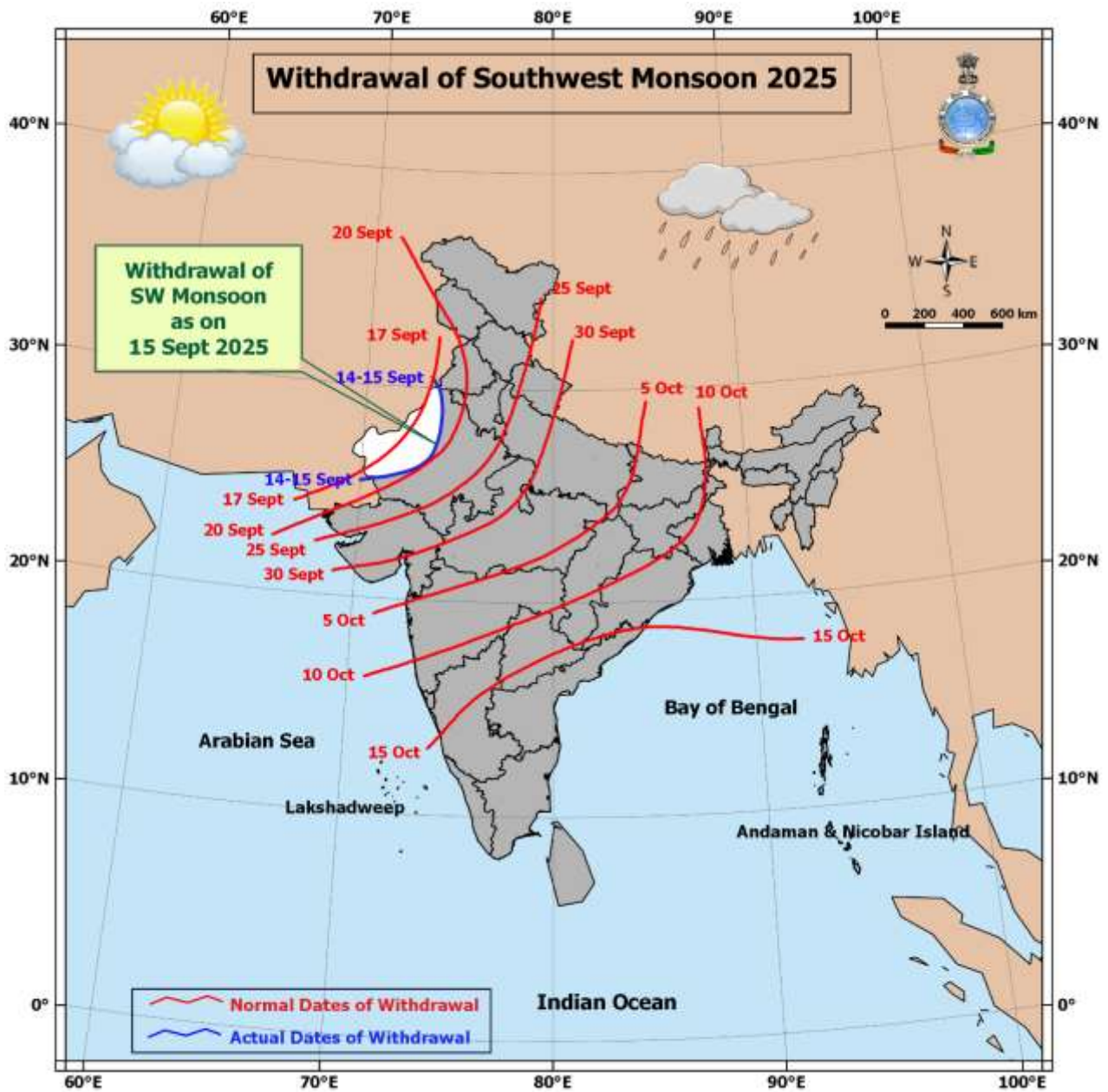






- Action may be taken based on ORANGE AND REDCOLOUR warnings.
- Vulnerable regions likely urban and hilly areas action may be initiated for heavy rainfall warning.
- As the lead period increases forecast accuracy decreases.

Detailed districtwise Multi Hazard weather warning for next five days available at  
<https://mausam.imd.gov.in/responsive/districtWiseWarningGIS.php>



**Weather forecast over Delhi/NCR during 15<sup>th</sup> to 18<sup>th</sup> September 2025****Past Weather:**

There has been no large change in the minimum and maximum temperatures over Delhi/NCR during the past 24 hours. The maximum and minimum temperatures over Delhi were around 33 to 34°C and 24 to 26°C respectively. The minimum and maximum temperatures were near normal. Partly cloudy sky conditions with predominant surface wind from the northwest/west direction with wind speeds up to 18 kmph prevailed during the past 24 hours. Mainly clear sky conditions with a wind speed of less than 16 kmph from the west direction prevailed over the region in the forenoon today.

**Weather Forecast:**

**15.09.2025:** Mainly clear sky becoming partly cloudy sky towards afternoon. The maximum and minimum temperatures over Delhi are likely to be in the range of 34 to 36°C. The maximum temperature will be above normal up to 1 to 2°C. The predominant surface wind will likely to be from the northwest direction with a wind speed of up to 15-20 kmph during afternoon hours. The wind speed will decrease becoming less than 10 kmph from the northwest direction during the evening and night.

**16.09.2025:** Partly cloudy sky. The maximum and minimum temperatures over Delhi are likely to be in the range of 33 to 35°C and 23 to 25°C respectively. The minimum temperature will be near normal and the maximum temperature will be near normal. The predominant surface wind will likely to be from the northwest direction with a wind speed of up to 10-15 kmph during morning hours. The wind speed will gradually increase becoming less than 20 kmph from the northwest direction in the afternoon. The wind speed will decrease becoming less than 15 kmph from the southeast direction during the evening and night.

**17.09.2025:** Partly cloudy sky. The maximum and minimum temperatures over Delhi are likely to be in the range of 32 to 34°C and 23 to 25°C respectively. The minimum temperature will be below normal up to 1 - 2°C and the maximum temperature will be below normal up to 1 - 2°C. The predominant surface wind will likely to be from the northwest direction with a wind speed of up to 10-15 kmph during morning hours. The wind speed will gradually increase becoming less than 25 kmph from the southwest direction in the afternoon. The wind speed will decrease becoming less than 10 kmph from the southeast direction during the evening and night.

**18.09.2025:** Partly cloudy sky. The maximum and minimum temperatures over Delhi are likely to be in the range of 32 to 34°C and 23 to 25°C respectively. The minimum temperature will be below normal up to 1 - 2°C and the maximum temperature will be below normal up to 1 - 2°C. The predominant surface wind will likely to be from the north direction with a wind speed of up to 08-12 kmph during morning hours. The wind speed will gradually increase becoming less than 15 kmph from the north direction in the afternoon. The wind speed will decrease becoming less than 12 kmph from the northeast direction during the evening and night.

**Impact & Action Suggested due to**

- ❖ **Extremely heavy rainfall ( $\geq 21$  cm)** likely over Konkan and Madhya Maharashtra on 15<sup>th</sup> September.
- ❖ **Heavy to very heavy rainfall (12-20 cm)** at isolated places over Uttarakhand, East Uttar Pradesh, Nagaland, Assam & Meghalaya on 15<sup>th</sup>; Arunachal Pradesh, Bihar, Jharkhand, Marathawada on 15<sup>th</sup> & 16<sup>th</sup>; Sub-Himalayan West Bengal & Sikkim during 15<sup>th</sup>-17<sup>th</sup> and Konkan & Goa, Madhya Maharashtra on 16<sup>th</sup> September.

**Impact Expected**

- Localized Flooding of roads, water logging in low lying areas and closure of underpasses mainly in urban areas of the above region.
- Occasional reduction in visibility due to heavy rainfall.
- Disruption of traffic in major cities due to water logging in roads leading to increased travel time.
- Minor damage to kutcha roads.
- Possibilities of damage to vulnerable structure.
- Localized Landslides/Mudslides/landslips/mudslips/landsinks/mudsinks.
- Damage to horticulture and standing crops in some areas due to inundation.



- It may lead to riverine flooding in some river catchments (for riverine flooding please visit Web page of CWC)

#### **Action Suggested**

- Check for traffic congestion on your route before leaving for your destination.
- Follow any traffic advisories that are issued in this regard.
- Avoid going to areas that face the water logging problems often.
- Avoid staying in vulnerable structure.

#### **Agromet advisories for likely impact of Heavy / Heavy to Very Heavy/ Extremely Heavy Rainfall**

- In Maharashtra, keep the harvested produce of green gram and black gram at safer places in Madhya Maharashtra and Vidarbha, if storage is not possible cover the harvested produce with plastic or tarpaulin sheets. In Marathwada, immediately harvest the matured fruits of sapota and custard apple and keep the harvested produce at safer places. Drain out excess water from fields of vegetables and fruit orchards in Konkan; rice, sugarcane, pigeon pea, soybean, maize, vegetables and fruit orchards in Madhya Maharashtra; sugarcane, sorghum, soybean, turmeric, vegetables and fruit orchards in Marathwada; pigeon pea, cotton, soybean, maize, vegetables and fruit orchards in Vidarbha.
- In Arunachal Pradesh, immediately harvest matured crops of *Jhum* rice, soybean, finger millet, foxtail millet, vegetables, matured bunches of banana and matured fruits of apple and kiwi and shift the harvested produce to properly covered shelter. Maintain proper drainage in standing crops such as rice, soybean, finger millet, vegetables and fruit orchards to avoid water stagnation. Avoid fresh sowing of French bean during heavy rainfall and ensure proper drainage in already sown crop.
- In Assam, ensure proper drainage in fields of rice, sugarcane, black gram and sesame in Hill Zone. In Lower Brahmaputra Valley Zone, ensure proper drainage system in *Sali* rice fields and nursery bed of vegetables. Cover the nursery bed with thin polythene to avoid the damages due to heavy rainfall. In Upper Brahmaputra Valley Zone, harvest the matured vegetables and fruits and transfer it to a safer location and make arrangements to drain out excess water from the standing crop fields. In North Bank Plain Zone, ensure proper drainage in rice, sesame and vegetables and keep the harvested produce of jute at safer place.
- In Meghalaya, maintain proper drainage in ginger and vegetable fields and fruit orchards. Provide support to tall and fragile crops like banana, papaya, pumpkin, etc. to prevent lodging.
- In Nagaland, undertake harvesting of matured *Jhum* rice, pods of sesame and Naga King chilli and store the harvested produce in safe places. Maintain 3-5 cm stagnate water in rice fields.
- In Sub-Himalayan West Bengal, drain out excess water from *aman* paddy and vegetable fields (chilli, bitter gourd, pointed gourd, okra, brinjal etc.) in Terai Zone and black gram, finger millet, ginger, dalley khorsani, vegetables and fruit orchards in Hill Zone.
- In Jharkhand, keep the harvested produce of green gram in safer places. Make necessary arrangements to drain out excess water from already sown cabbage, cauliflower, radish and early potato in Western Plateau Zone.
- In Bihar, ensure proper drainage of excess rainwater from standing crops such as maize and vegetables in North West Alluvial Plain Zone and maize, finger millet and vegetables in North East Alluvial Zone.
- In Uttarakhand, ensure proper drainage in the fields of green gram, black gram, soybean, barnyard millet and finger millet in Sub Humid Sub Tropic Zone. In Bhabar and Tarai Zone, maintain proper drainage in fields of rice, pigeon pea, black gram, green gram, finger millet, maize and soybean. Avoid sowing of potato and radish under heavy rainfall conditions and ensure proper drainage in already sown crop. In Hill Zone, undertake harvesting of matured crops of barnyard millet, ginger and rainfed rice and keep the harvested produce in safe place. Ensure proper drainage in pigeon pea and vegetable crops.
- In Uttar Pradesh, make proper arrangements for drainage of excess rain water from the fields of rice, green gram, black gram, pigeon pea and vegetables in Bundelkhand Zone.
- In Telangana, ensure adequate drainage facilities to drain out excess rain water in fields of rice, maize, cotton, soybean, pigeon pea, turmeric and vegetables.

## Livestock / Fishery

- Keep the animals inside the shed during heavy rainfall and provide them balanced feed.
- Store feed and fodder in a safe place to prevent spoilage.
- Construct an outlet with proper netting around the ponds to drain out excess water, thereby preventing fish from escaping in case of overflow.

## Agromet advisories for likely impact of Thunderstorm / Gusty Winds / Squally Winds

- Provide mechanical support to horticultural crops and staking or support to vegetables and young fruit plants / fruit-bearing plants to avoid lodging due to strong winds.

## Flash Flood Guidance:

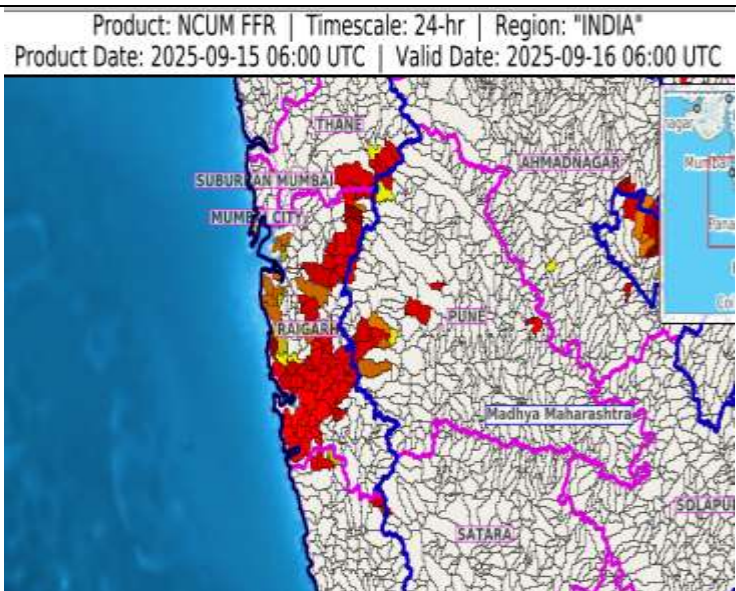
<p>24 hours Outlook for the Flash Flood Risk (FFR) till 1130 IST of 16-09-2025 :</p> <p>Moderate flash flood risk likely over few watersheds &amp; neighbourhoods of following Met Sub-divisions during next 24 hours.</p> <p>Assam &amp; Meghalaya - Baksa, Barpeta, Bongaigaon, Cachar, Chirang, Dhemaji, Dibrugarh, Goalpara, Kokrajhar, Lakhimpur, Morigaon, N.C Hills, Nagaon, Nalbari, Sibsagar, Sonitpur, Tinsukia, East Khasi Hills, Ri Bhoi, South Garo Hills, West Khasi Hills and Jaintia Hills districts.</p> <p>Nagaland Mizoram Manipur Tripura ( NMMT) –</p> <p>Manipur- Chandel, Churachandpur, Senapati, Ukhrul,</p> <p>Nagaland- Kiphire, Kohima, Longleng, Mokochung, Mon, Phek, Tuensang, Wokha and Zunheboto districts.</p> <p>Sub-Himalayan West Bengal &amp; Sikkim - East Sikkim, North Sikkim, Jalpaiguri and Kochbihar districts.</p> <p>Surface runoff/ Inundation may occur at some fully saturated soils &amp; low-lying areas over Area of Concern (AoC) as shown in map due to expected rainfall occurrence in next 24 hours.</p>	<p>Product: WRF FFR   Timescale: 24-hr   Region: "INDIA"</p> <p>Product Date: 2025-09-15 06:00 UTC   Valid Date: 2025-09-16 06:00 UTC</p>
<p>24 hours Outlook for the Flash Flood Risk (FFR) till 1130 IST of 16-09-2025 :</p> <p>Moderate to High flash flood risk likely over few watersheds &amp; neighbourhoods of following Met Sub-divisions during next 24 hours.</p> <p>Uttarakhand - Almora, Bageshwar, Chamoli, Champawat, Dehradun, Nanital, Pauri Garhwal, Pithoragarh, Rudraprayag, Tehri Garwal and Uttarkashi districts.</p> <p>Surface runoff/ Inundation may occur at some fully saturated soils &amp; low-lying areas over Area of Concern (AoC) as shown in map due to expected rainfall occurrence in next 24 hours.</p>	<p>Product: WRF FFR   Timescale: 24-hr   Region: "INDIA"</p> <p>Product Date: 2025-09-15 06:00 UTC   Valid Date: 2025-09-16 06:00 UTC</p>

24 hours Outlook for the Flash Flood Risk (FFR) till 1130 IST of 16-09-2025 :

Low to Moderate flash flood risk likely over few watersheds & neighbourhoods of following Met Sub-divisions during next 24 hours.

Konkan & Goa - Mumbai City, Raigarh, Suburban Mumbai and Thane districts. Madhya Maharashtra - Pune district.

Surface runoff/ Inundation may occur at some fully saturated soils & low-lying areas over Area of Concern (AoC) as shown in map due to expected rainfall occurrence in next 24 hours.



### Legends & abbreviations:

- ❖ **Heavy Rain:**64.5-115.5mm; **Very Heavy Rain:**115.6-204.4mm; **Extremely Heavy Rain:** >204.4mm.
- ❖ **Obsy:** Observatory; Automatic Weather Station; **ARG:** Automatic Rain Gauge; **dist:** District; **NH:** National Highway; **KVK:** Krishi Vigyan Kendra; **DVC:** Damodar Valley Corporation; **PTO:** Part Time Office, **Aero:** Aerodrome, **IAF:** Indian Air Force.
- ❖ **Region wise classification of meteorological Sub-Divisions:**
  - **Northwest India:** Western Himalayan Region (Jammu-Kashmir-Ladakh-Gilgit-Baltistan-Muzaffarabad, Himachal Pradesh and Uttarakhand); Punjab, Haryana-Chandigarh-Delhi; West Uttar Pradesh, East Uttar Pradesh, West Rajasthan and East Rajasthan.
  - **Central India:** West Madhya Pradesh, East Madhya Pradesh, Vidarbha and Chhattisgarh.
  - **East India:** Bihar, Jharkhand, Sub-Himalayan West Bengal & Sikkim; Gangetic West Bengal, Odisha and Andaman & Nicobar Islands.
  - **Northeast India:** Arunachal Pradesh, Assam & Meghalaya and Nagaland, Manipur, Mizoram & Tripura.
  - **West India:** Gujarat Region, Saurashtra & Kutch, Konkan & Goa, Madhya Maharashtra and Marathawada.
  - **South India:** Coastal Andhra Pradesh & Yanam, Telangana, Rayalaseema, Coastal Karnataka, North Interior Karnataka, South Interior Karnataka, Kerala & Mahe, Tamil Nadu, Puducherry & Karaikal and Lakshadweep.





## LEGENDS

1. अंडमान और निकोबार द्वीपसमूह

2. अरुणाचल प्रदेश

3. असम और मेघालय

4. नागालैंड, मणिपुर, मिजोरम और त्रिपुरा

5. उप-हिमालयी पश्चिम बंगाल और सिक्किम

6. गंगीय पश्चिम बंगाल

7. ओडिशा

8. झारखंड

9. बिहार

10. पूर्वी उत्तर प्रदेश

11. पश्चिम उत्तर प्रदेश

12. उत्तराखंड

13. हरियाणा, चंडीगढ़ और दिल्ली

14. पंजाब

15. हिमाचल प्रदेश

16. जम्मू और कश्मीर और लद्दाख

17. पश्चिम राजस्थान

18. पूर्वी राजस्थान

19. पश्चिम मध्य प्रदेश

20. पूर्वी मध्य प्रदेश

21. गुजरात

22. सौराष्ट्र

23. कोंकण और गोवा

24. मध्य महाराष्ट्र

25. मराठवाड़ा

26. विदर्भ

27. छत्तीसगढ़

28. तटीय आंध्र प्रदेश और यनम

29. तेलंगाना

30. रायलसीमा

31. तमिलनाडु, पुडुचेरी और कराईकल

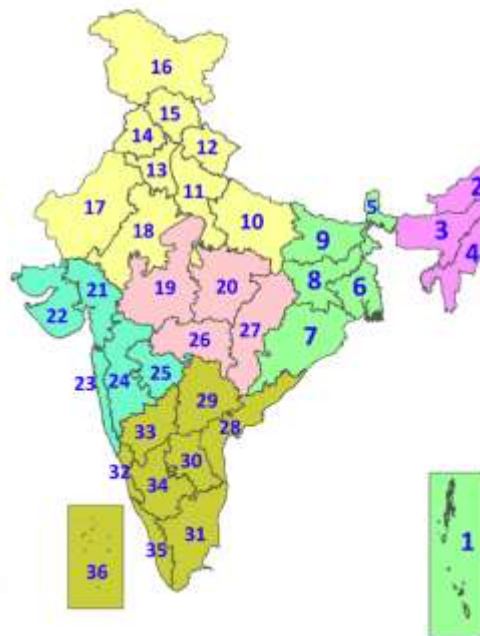
32. तटीय कर्नाटक

33. आंतरिक उत्तरी कर्नाटक

34. आंतरिक दक्षिणी कर्नाटक

35. केरल और माहे

36. लक्षद्वीप



1. Andaman & Nicobar Islands

2. Arunachal Pradesh

3. Assam & Meghalaya

4. Nagaland, Manipur, Mizoram & Tripura

5. Sub-Himalayan West Bengal & Sikkim

6. Gangetic West Bengal

7. Odisha

8. Jharkhand

9. Bihar

10. East Uttar Pradesh

11. West Uttar Pradesh

12. Uttarakhand

13. Haryana, Chandigarh & Delhi

14. Punjab

15. Himachal Pradesh

16. Jammu & Kashmir and Ladakh

17. West Rajasthan

18. East Rajasthan

19. West Madhya Pradesh

20. East Madhya Pradesh

21. Gujarat

22. Saurashtra

23. Konkan & Goa

24. Madhya Maharashtra

25. Marathwada

26. Vidarbha

27. Chhattisgarh

28. Coastal Andhra Pradesh & Yanam

29. Telangana

30. Rayalaseema

31. Tamilnadu, Puducherry & Karaikal

32. Coastal Karnataka

33. North Interior Karnataka

34. South Interior Karnataka

35. Kerala & Mahe

36. Lakshadweep

## SPATIAL DISTRIBUTION (% of Stations reporting)

% Stations	Category	% Stations	Category
76-100	Widespread (WS/Most Places)	26-50	Scattered (SCT/A Few Places)
51-75	Fairly Widespread (FWS/Many Places)	1-25	Isolated (ISOL)



Fog



Heavy Snow



Cold Wave



Heavy Rain



Dust Storm



Cold Day



Very Heavy Rain



Heat Wave



Ground Frost



Extremely Heavy Rain



Warm Night



Thunder & Lightning



Hot Day



Hailstorm



Hot & Humid



Dust Raising Winds



Strong Surface Winds

### COLOUR CODED WARNING

No Warning (No Action)

Watch (Be Aware)

Alert (Be Prepared To Take Action)

Warning (Take Action)

### Probabilistic Forecast

Terms	Probability of Occurrence (%)
Unlikely	< 25
Likely	25 - 50
Very Likely	50 - 75
Most Likely	> 75

\* Red colour warning does not mean "Red Alert", Red colour warning means "Take Action".

Forecast and Warning for any day is valid from 0830 hours IST of day till 0830 hours IST of next day.

For more details, kindly visit <https://mausam.imd.gov.in> or contact: 011-2434-4599

(Service to the Nation since 1875)



### DEFINITION/CRITERIA

#### Rain/ Snow \*

Heavy: 64.5 to 115.5 mm/cm \*  
Very Heavy: 115.6 to 204.4 mm/cm \*  
Extremely Heavy: > 204.4 mm/cm \*

#### Heat Wave

When maximum temperature of a station reaches  $\geq 40^{\circ}\text{C}$  for plains and  $\geq 30^{\circ}\text{C}$  for hilly regions  
(a) Based on Departure from normal

Heat Wave: Maximum Temperature Departure from normal  $4.5^{\circ}\text{C}$  to  $6.4^{\circ}\text{C}$ .

Severe Heat Wave: Maximum Temperature Departure from normal  $\geq 6.5^{\circ}\text{C}$

(b). Based on Actual maximum temperature

Heat Wave: When actual maximum temperature  $\geq 45^{\circ}\text{C}$ .

Severe Heat Wave: When actual maximum temperature  $\geq 47^{\circ}\text{C}$ .

(c). Criteria for heat wave for coastal stations

When maximum temperature departure is  $> 4.5^{\circ}\text{C}$  from normal. Heat Wave may be described provided maximum temperature  $\geq 37^{\circ}\text{C}$ .

#### Warm Night

When maximum temperature remains  $40^{\circ}\text{C}$

Warm Night: When minimum temperature departure  $4.5^{\circ}\text{C}$  to  $6.4^{\circ}\text{C}$ .

Severe Warm Night: When minimum temperature departure  $> 6.4^{\circ}\text{C}$ .

#### Cold Wave

When minimum temperature of a station  $\leq 10^{\circ}\text{C}$  for plains and  $\leq 0^{\circ}\text{C}$  for hilly regions.

(a). Based on departure

Cold Wave: Minimum Temperature Departure from normal  $-4.5^{\circ}\text{C}$  to  $-6.4^{\circ}\text{C}$ .

Severe Cold Wave: Minimum Temperature Departure from normal  $\leq -6.5^{\circ}\text{C}$

(b) Based on actual Minimum Temperature (for Plains only)

Cold Wave: When Minimum Temperature is  $\leq 4.0^{\circ}\text{C}$

Severe Cold Wave: When Minimum Temperature is  $\leq 2.0^{\circ}\text{C}$

(c) For Coastal Stations

When Minimum Temperature departure is  $\leq -4.5^{\circ}\text{C}$  & actual Minimum Temperature is  $\leq 15^{\circ}\text{C}$

#### Cold Day

When minimum temperature of a station  $\leq 10^{\circ}\text{C}$  for plains and  $\leq 0^{\circ}\text{C}$  for hilly regions

Based on departure

Cold Day: Maximum Temperature Departure from normal  $-4.5^{\circ}\text{C}$  to  $-6.4^{\circ}\text{C}$ .

Severe Cold Day: Maximum Temperature Departure from normal  $\leq -6.5^{\circ}\text{C}$

#### Fog

Phenomenon of small droplets suspended in air and the horizontal visibility  $< 1\text{km}$

Moderate Fog: When the visibility between 500-200 metres

Dense Fog: when the visibility between 50- 200 metres

Very Dense Fog: when the visibility  $< 50$  metres

#### Thunderstorm

Sudden electrical discharges manifested by a flash of light (Lightning) and a sharp rumbling sound (thunder)

#### Dust/Sand Storm

An ensemble of particles of dust or sand energetically lifted to great heights by a strong and turbulent wind.

#### Frost

Ice deposits on ground

Air temperature  $\leq 4^{\circ}\text{C}$  ( over Plains)

#### Squall

A strong wind that rises suddenly, lasts for atleast 1 minute.

Moderate: Wind speed 52-61 kmph

Severe: Wind speed 62-67 kmph

Very Severe: Wind speed  $> 67$  kmph

#### Sea State

Effect of various waves in the sea over specific area

Rough to very rough: Wind speed 41-62 kmph (22-33 knots) & Wave height 2.5-6 metre

High to very high: Wind speed 63-117 kmph ( 34-63 knots) & Wave height 6-14 metre

Phenomenal: Wind speed  $> 117$  kmph ( $> 63$  knots) & Wave height  $> 14$  metre

#### Cyclone

Cyclonic Storm: Wind speed 62-87 kmph (34-47 knots)

Severe Cyclonic Storm: Wind speed 88-117 kmph (48-63 knots)

Very Severe Cyclonic Storm: Wind speed 118-165 kmph (64 - 89 knots)

Extremely Severe Cyclonic Storm: Wind speed 166-220 kmph (90 -119 knots)

Super Cyclone Storm: Wind speed  $> 220$  kmph ( $> 119$  knots)

\* Red colour warning does not mean "Red Alert", Red colour warning means "Take Action".

Forecast and Warning for any day is valid from 0830 hours IST of day till 0830 hours IST of next day.

For more details, kindly visit <https://mausam.imd.gov.in> or contact: 011-2434-4599

(Service to the Nation since 1875)

**Hot and Humid:** When maximum temperatures remain  $3^{\circ}\text{C}$  above normal along with the above normal relative humidity.